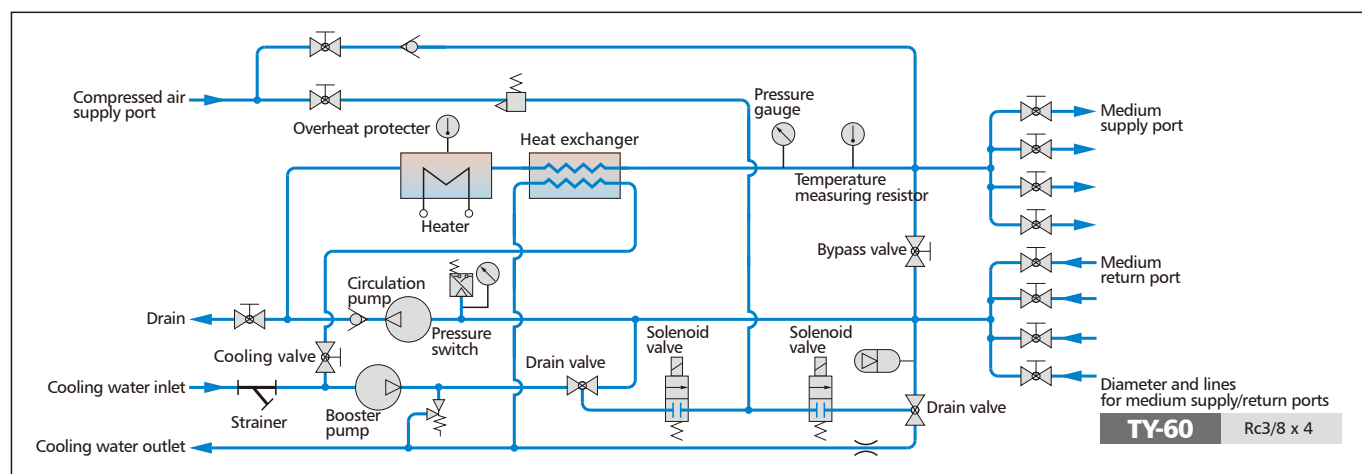


Pressurized Water Mold Temperature Controller

TY-60		
Heating medium		Water
Temperature setting range	°C	Water supply temperature +40 -- Max. 160 (Accuracy: ±1)
Cooling mechanism		Direct / Indirect cooling switching
Total electric capacity (50/60Hz)	kVA	6.87 / 6.87
Heater	Type	sheathed heater
	Control mechanism	Pump SSC
	Power	kW 6.0
Circulation pump	Type	Cascade pump
	Motor power	kW 1.1
	Max. pressure	MPa 0.5 / 0.45
	Max. flowrate	L/min 45 / 62
Booster pump	Type	Cascade pump
	Motor power	kW 0.31
Controller	Temperature control mechanism	PID
	Temperature detection mechanism	Pt100 temperature measuring resistor (Set on the medium supply line)
	Setting and indication mechanism	Touch keys and digital display
	Timer	Setting range: 0 -- 99 hr (Operation start after set time elapses)
	Alarm	Pump overload, overheating, reverse phase, temperature control error
Piping	Cooling water inlet	Rc3/8
	Cooling water outlet	Rc3/8
	Medium supply port	Rc3/8 x 4
	Medium return port	Rc3/8 x 4
	Compressed air supply port	Rc1/8
Cooling water consumption	L/min	10.0 and over
Cooling water pressure	MPa	0.15~0.3
Cooling water back pressure	MPa	0.05 or less
Compressed air pressure	MPa	0.4~0.69
Power	Power supply standard	200 / 220V 50 / 60Hz 3ø
	Power plug	30A-3P plug with protective ground
Outer dimensions (WxDxH)	mm	300 x 865 x 700
Weight	kg	100

■ TY-60 flow chart



- The max. flowrate is given for a discharge pressure of 0.1 MPa. ● Pure water that clears JRAIA supply water quality standards is required as a heat medium.
- An adapter is included, therefore inform Stolz of the piping diameter. ● Use only heat-resistant Teflon hose.
- Specifications are subject to change without notice.